



VDESKONLINE FOR ANDROID

INTRODUCTION: This guide will assist with downloading and setting up vDeskOnline for a device that uses Android OS.

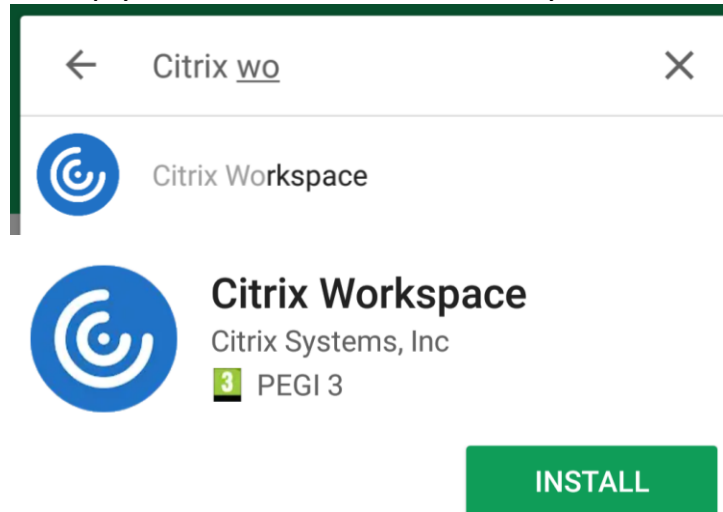
SYSTEM REQUIREMENTS: Any device that contains an Android OS

WHAT YOU MAY NEED & OTHER CONSIDERATIONS:

- Internet connection
- vDeskOnline username and password

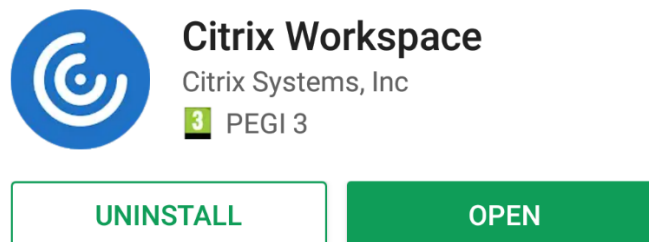
STEP ONE

Ensure you have the Citrix Workspace by downloading the latest version from Google Play Store. Simply search for Citrix on the Play store and install.



STEP TWO

Once installed, open the app and select "Get Started". You may see a page that explains the transition from Receiver to Workspace. If so, just click "Got it".

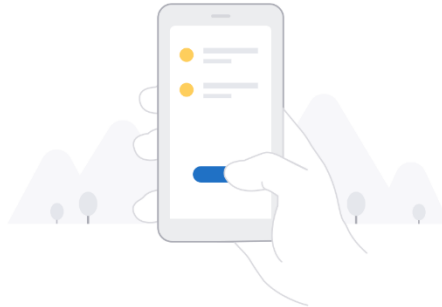


Citrix Receiver is now
Citrix Workspace app



Citrix Workspace app extends the
capabilities of Citrix Receiver, making it
even easier for you to stay productive.

Got it



Securely access your favorite apps and
services in one place and access them
anvtime on anv device

Get Started

STEP THREE

Next, enter go.vdeskonline.com in the 'server or email address' field.

To get started, enter your company email address
or Store URL

go.vdeskonline.com

Add account type as Web Interface

Continue

STEP FOUR

Enter your username and password for vDeskOnline and then click sign on.

Enter your credentials

User name

your username

Password

.....



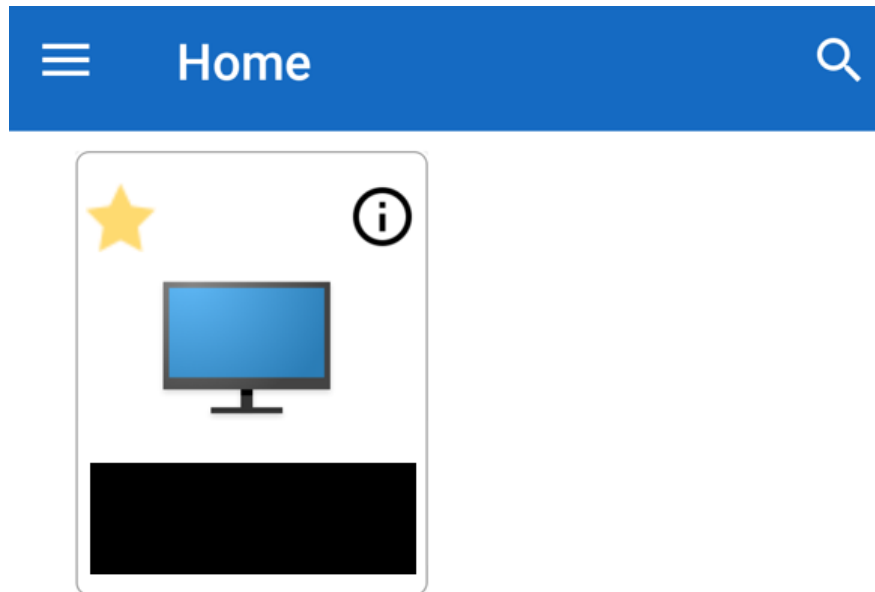
SIGN ON

STEP FIVE

It will automatically open the last vDesk you accessed the first time you sign in.

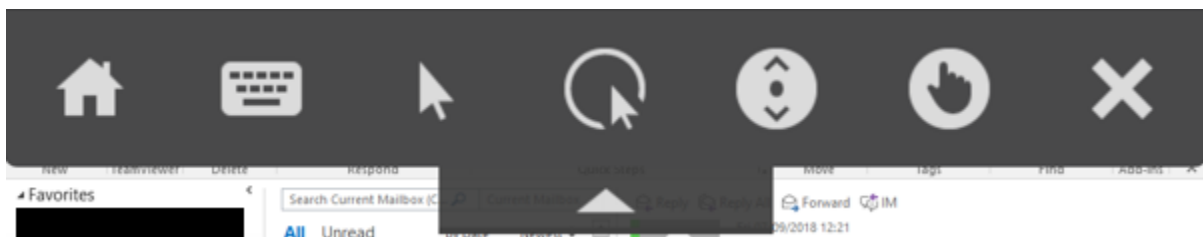
STEP SIX

When you go back into your vDesk, you will be able to view and access any of the vDesks you have.



THINGS TO NOTE

You may see a little grey drop down box. Below will explain what each option does:



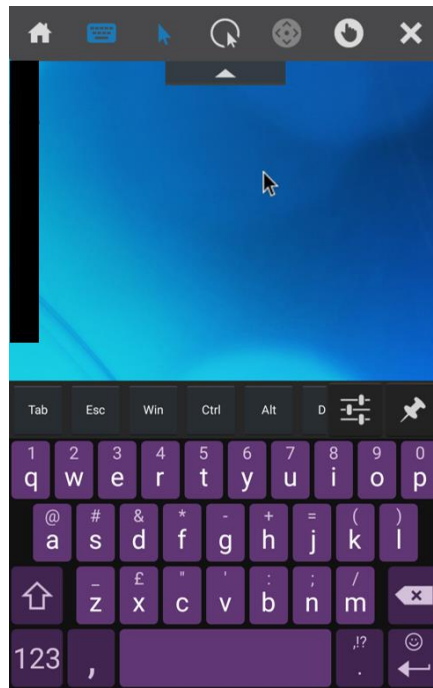
Keyboard and mouse:

You can get an on-screen keyboard and mouse with the below icons.



For support please call +44 (0) 20 3740 1060, or email support@it-logik.com

It will look something like this:

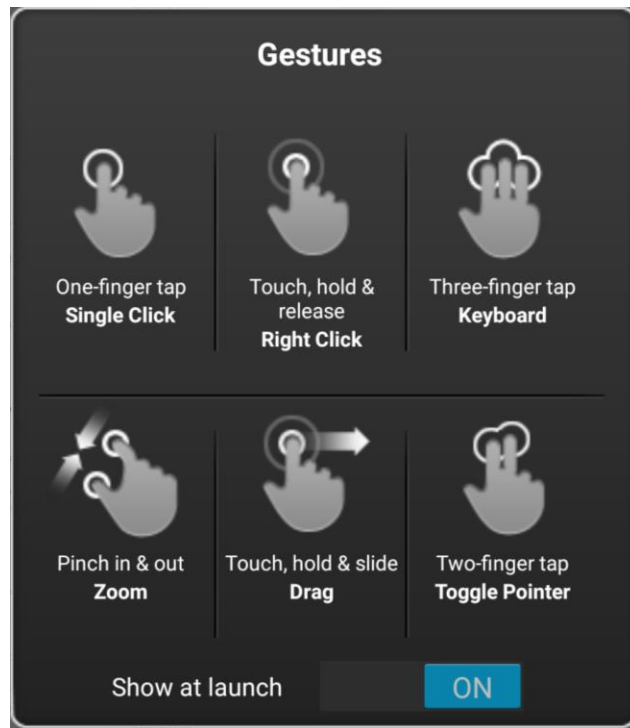


Gestures:

The below is the gestures button.



This will show you the different ways you can interact with your vDesk.



Scroll lock:

If you want to scroll, you can click on the below button.



To turn it off, simply click on it once more.

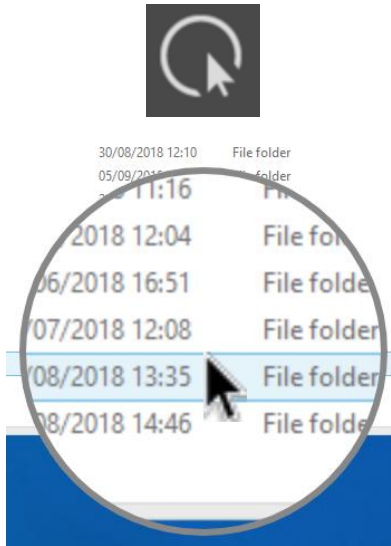
Disconnect and log off:

The “Home” icon is to disconnect. The “X” icon will log you off.



Zoomed cursor:

The below will give you a cursor with a zoomed view of the stuff around it for more accurate clicks.



Please note that all the above can be turned off by simply clicking on the icon once more.